



## A new innovative design concept in decorating with glass tile has been created.

EMBLAZ'ON would like to introduce their Metals Collection. It is another unique addition to their growing collection of glass tiles. These stunning and sleek metallic glass tiles have been made using glass for its elegance and durable qualities.

The clarity of the glass assists the reflective qualities of the design elements to achieve these remarkable metal versions for an extraordinary textural design element. You can enhance every room combining these versatile glass tiles with other complimentary or contrasting tile mediums. Whether used as single decos, a running border, or as an addition to your existing tile they will exhibit a stylish sophistication and is an ideal addition for that finishing touch.

### Adorn your world with dimensions in glass from EMBLAZ'ON



The Metals Collection consist of seven shimmering metal finishes. Each design carries its own distinct tone and unique characteristic, while displaying all of the refined look and luster of authentic metal textures.

You will create a lasting impression using any of these metal charms on any of your interior/exterior surfaces.

- Eco-friendly
- Easy maintenance
- Made in the USA
- Patent Pending

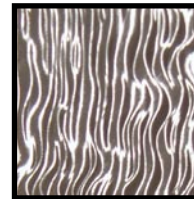
They are all available in four sizes: 4 x 4, 2 x 2, 1 x 1, and 1/2 x 6 (in)

Custom sizes are available, visit us online for more details.

[www.emblazon.net](http://www.emblazon.net)



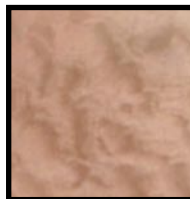
Diamond Plate-nini



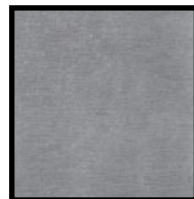
Renwove



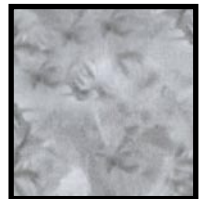
Coarse Brush Copper



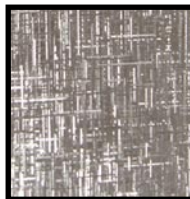
Copper Leaf



Brush Aluminum



Galvanized



Linen

